



FinalSub 1.0.2

Help

Oct, 2010

www.finalsub.com

Index

Profile	3
Installation and Launch	3
First Launch	4
User Interface	5
Subtitling Workflow	7
<i>Export QuickTime Movie from Final Cut Pro</i>	7
<i>Create Sample Text in Final Cut Pro</i>	8
<i>Load MOV in FinalSub</i>	9
<i>Load Final Cut Pro Sample Text</i>	10
<i>Load Text File</i>	11
<i>Generating Timecode</i>	11
<i>Send the result to Final Cut Pro</i>	11
Change Font Setting	12
Hear Video and Input subtitle text	12
Multi Track of Subtitles	12
Preference Pane	13
Text and Timecode Operating	14
<i>Text Operation</i>	14
<i>Timecode Operating</i>	14
Import and Export	15
Shortcuts	16
USB Dongle and Serial Number	17
FAQ	18

Profile

Final Cut Pro is the leading Non-Linear Editing software in the world. Mac NLE has very good cost performance. But like most NLE software like Adobe Premier or Avid, it's hard to handle mass subtitle, for example, to put every dialogue of a video to subtitle.

With FinalSub, you can fundamentally solve the subtitle issues. FinalSub has the following advantages:



1. Easy to use. You don't need to read Help or to be trained.
2. Integrated with Final Cut Pro seamlessly. It's somehow like a plugin for Final Cut Pro.
3. Free editor for text editing.
4. Super easy to generate timecode. You just hit spacebar.
5. Super easy to adjust timecode.
6. Change all your font settings with just one click.
7. Trial mode for full function. Only 10 lines limitation.

Installation and Launch

Unzip the finalsub.zip from the CD or from www.finalsub.com to the folder Applications.



Plug the USB Dongle in, then double click the FinalSub icon FinalSub to launch it.

System Requirements:

Hardware: PowerPC G4 or up, USB 1.1 or up(for USB Dongle)

OS: Tiger 10.4.11 or up

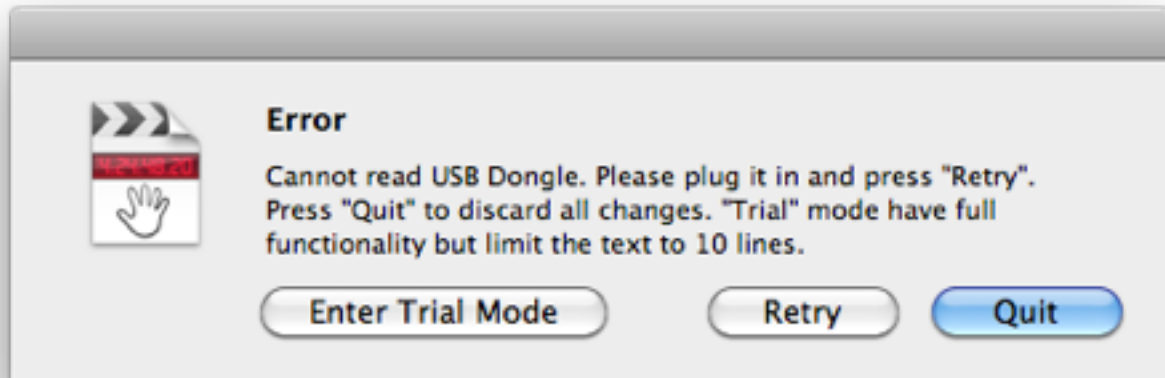
Final Cut Pro Version: Version 4.5 or up(Some key functions are not support by the version below 6.0.6 and strongly recommend Final Cut Pro 7.)

QuickTime Version: 7.4 or up

First Launch

Double click the FinalSub icon to launch FinalSub.

•If the USB Dongle is not plugged in, the following dialogue will shows up:



It's going to the full function trial by clicking "Enter Trial Mode". The trail mode has 10 lines of text limitation.

Plug in the USB dongle and press "Retry", the following dialogue shows up:

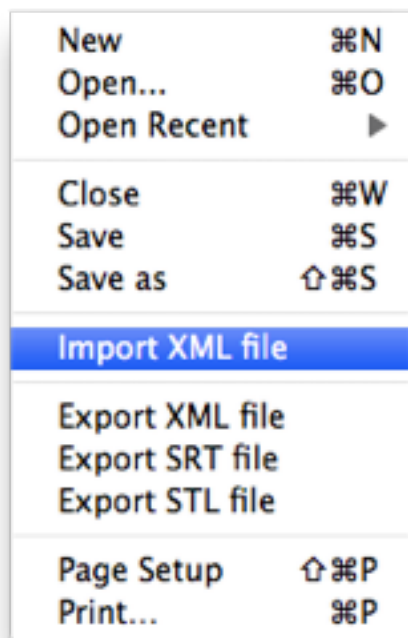


Input your 32 digits of Serial Number corresponding to your USB dongle. Press "confirm" to enter FinalSub. (Remark: every USB dongle has its own hardware ID. cc59b28d is the USB Dongle ID in this case.)

User Interface

FinalSub is intuitive. It contains six components: Menu, Toolbar, Video Viewer, Controls, Text Editor and Preference Pane.

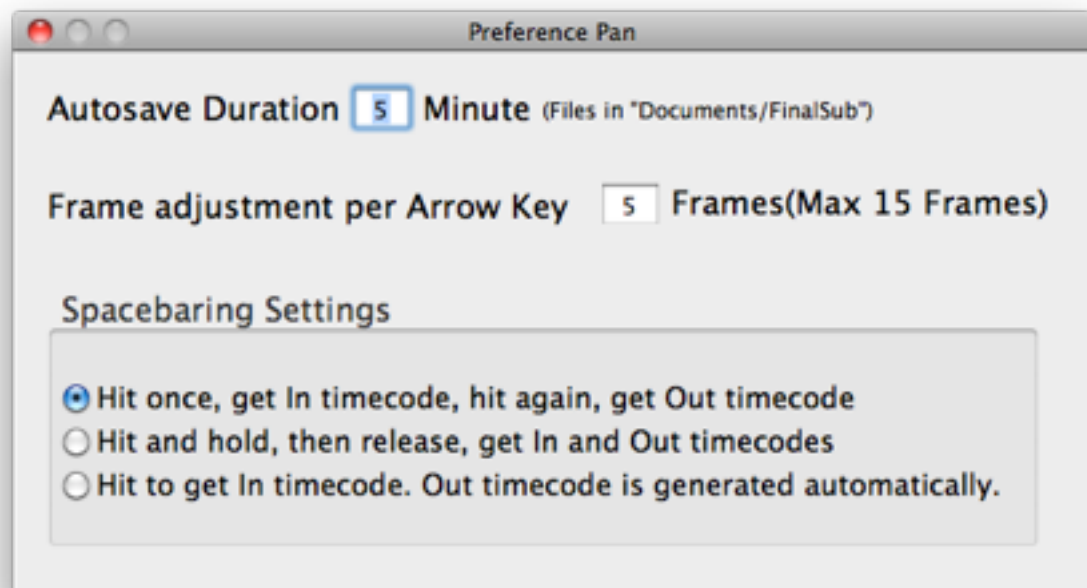
•Menu:



•Toolbar, Video Viewer, Controls, Text Editor (Tooltips will show up when hover your mouse over the buttons.)



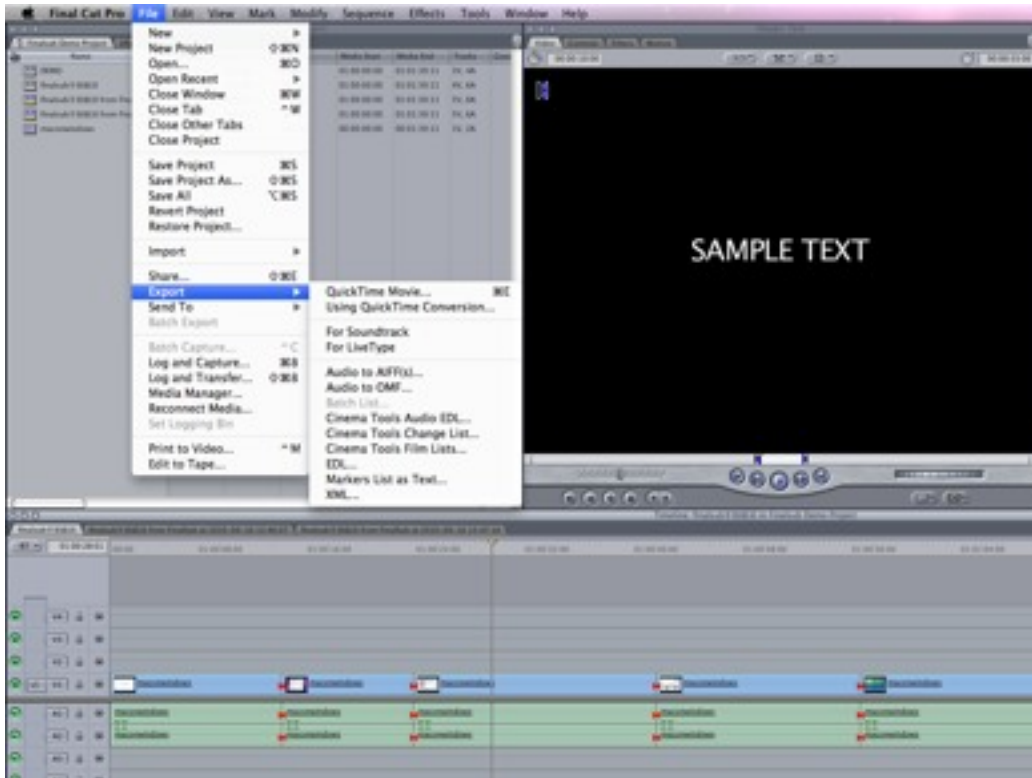
•Preference Pane:



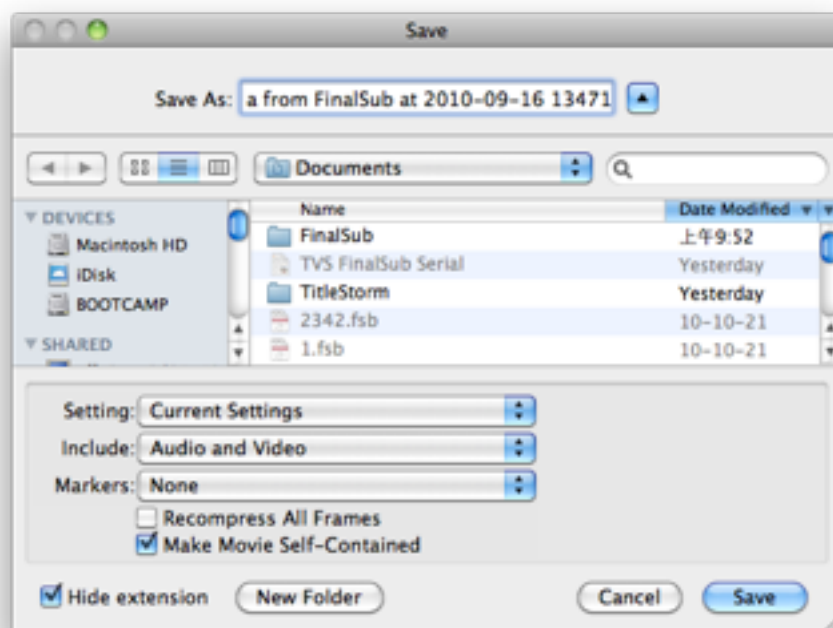
Subtitling Workflow

1.Export QuickTime Movie from Final Cut Pro

Export the current sequence to a Quicktime movie. Choose “File-Export-QuickTime Movie...” from Final Cut Pro menu.

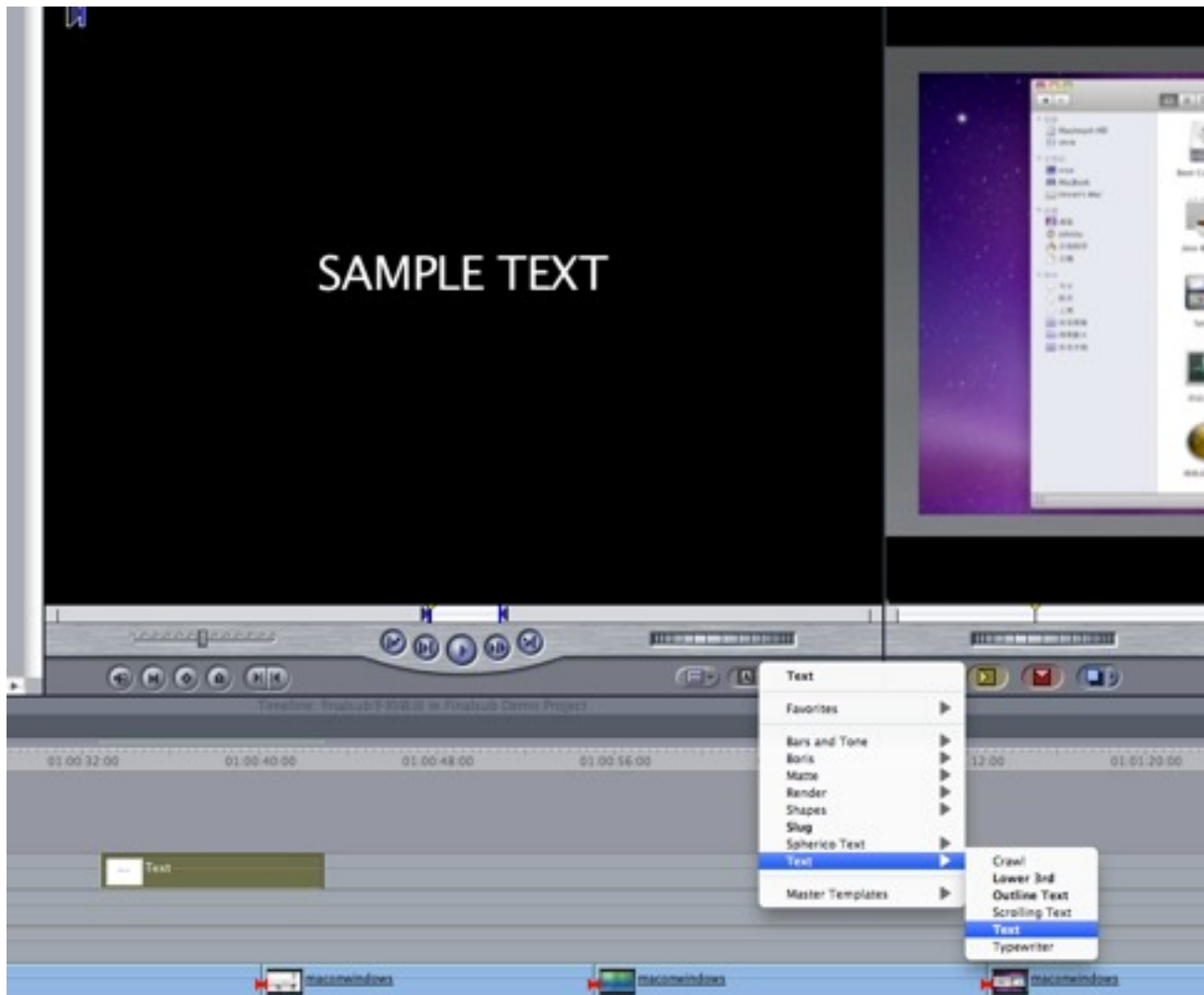


Save it as a new Movie and keep the settings as the following picture. Uncheck the “Make Movie Self-Contained” if doing subtitle locally to save exporting time and disk space. You can even export an audio file only. Remark: Don't change the frame rate setting anytime.



2.Create Sample Text in Final Cut Pro

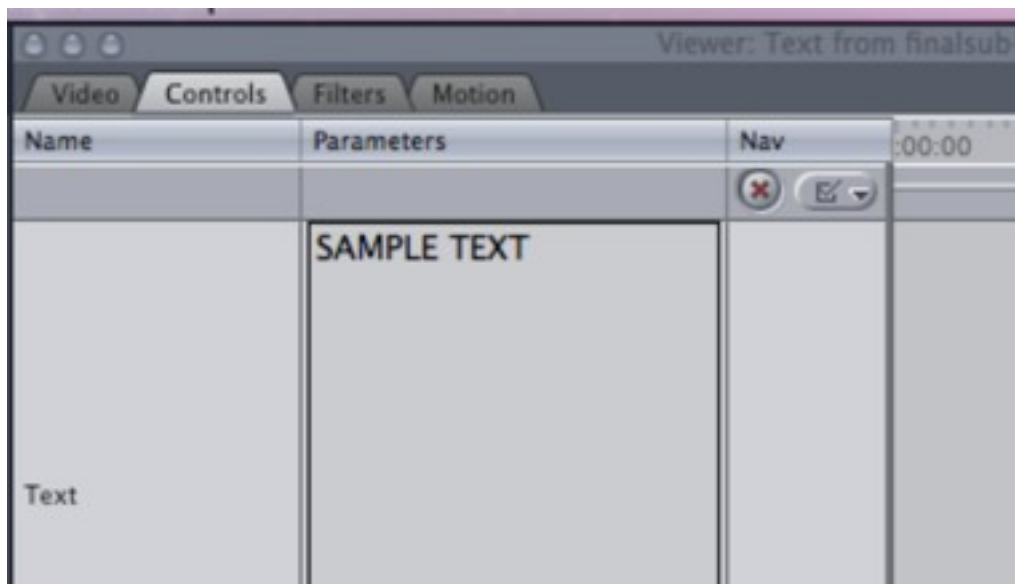
Add a new video track on top the timeline. Choose Text or Outline Text from the Text Generator under the viewer. Drag the Sample Text to the new video track. (We strongly suggest you to [download the 3rd party text generator Text Up 2](#). Put the downloaded file to Macintosh HD/Library/Application Support/Final Cut Pro System Support/Plugins/, then relaunch Final Cut Pro. You will find a “Spherico Text”--”Text Up 2” in the popup menu under the viewer.



You can adjust the size, color, position and other properties by double clicking the subtitle on the timeline, then choose “Controls” from the Viewer. All FinalSub subtitles will follow these settings later. If you don’t satisfy with the settings, you can change them by clicking the [“Change font setting”](#) on the toolbar.



Importance notice: Adjust parameters on the Viewer “Controls”, never try to make any change on the viewer “Motion” or “Filters”.



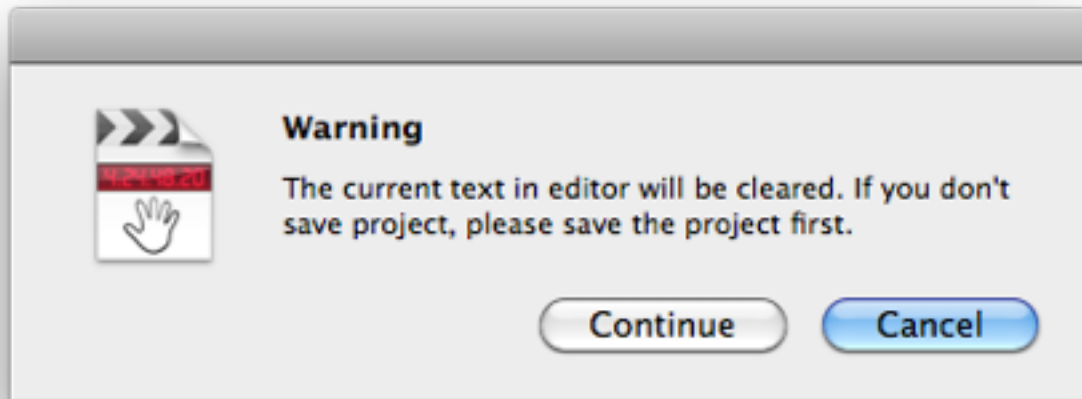
3.Load MOV in FinalSub

Launch FinalSub and click the **“1.Load MOV”** on the toolbar to import the quicktime movie exported from Final Cut Pro.

4. Load Final Cut Pro Sample Text

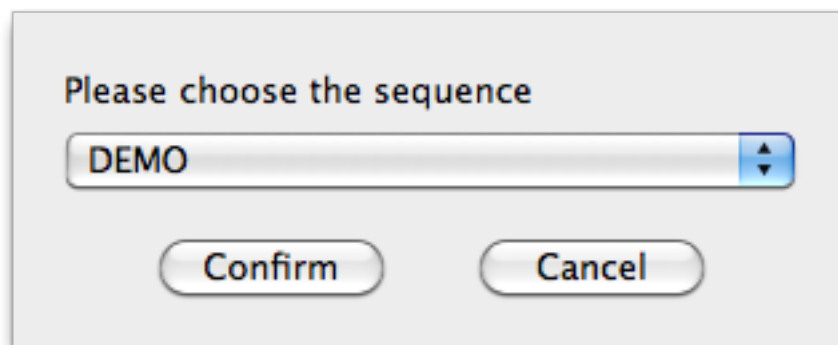
Click “2. Load FCP Sample Text” button on the toolbar, FinalSub will get the Sample Text and its settings directly from Final Cut Pro currently opened sequence.

FinalSub will show the following dialogue to remind you to save your FinalSub before Load FCP Sample Text.



If your Final Cut Pro version is lower than 7.0 and open multiple Projects, FinalSub will show up a dialogue for you to choose a Project.

If you have only one sequence, FinalSub will load it automatically, or, you will get the following dialogue reminding you to choose a Sequence.



“2. Load FCP Sample Text” can be alternative by choose FinalSub menu “File-import XML file”. You have to export a XML file from Final Cut Pro first.

Tips:

If you project is complicated and have loads of Sequences, please leave just the working sequence in the root and move all others to a media Bin. This will save your loading time.

5. Load Text File

You can paste text to the editor or input text in the editor instead of Load Text File.

Click the “**3. Load Text File**” to import a pure text file. Only *.txt is supported. FinalSub will show up a warning for you to save current works.

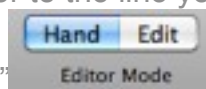
Click “Continue” to load the text file of subtitles.

Important notice: One sentence per line. Lines are separated by Return key. Try to copy and paste content if you want the text from Word, Email or any other software.


6. Generating Timecode

Press “**4. Start Hand**” to get help. This button is just for help and you can skip it next time.

Move the cursor to the line you want to start generate timecode. Make sure the Editor



Mode is “Hand” (Shortcut: Option+1)

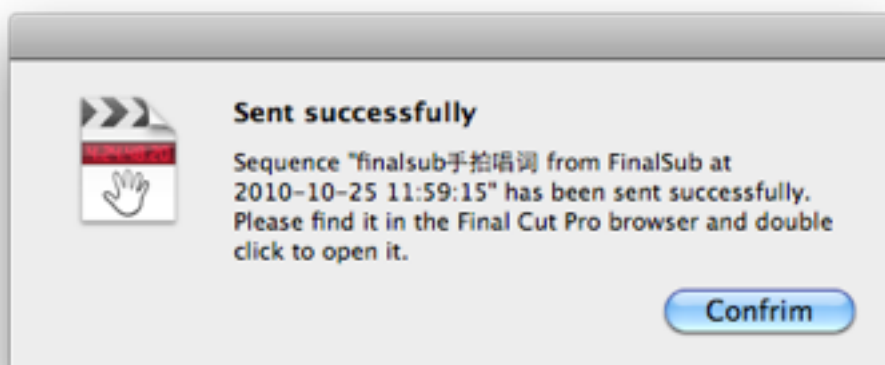
Press Tab key or click on  to play or pause the movie. Press Spacebar key to generate timecode. FinalSub have 3 kind of method to generate timecode. Please See [Preference Pane](#).

About timecode adjustment, editing etc., please refer to “[Text and Timecode Operating](#)”.

Left hand to press Tab. Right hand to press Spacebar continually to generate timecode. That’s why FinalSub call this Hand.

7. Send the result to Final Cut Pro

After finishing the timecode and timecode adjustment, click “**5. Send to FCP**” button on the toolbar to send all the subtitles to Final Cut Pro directly. FinalSub will show up the following dialogue. Please go back to Final Cut Pro and open the sequence sent by FinalSub.



Instead, you can choose menu “File-Export XML File” to export a XML file. Then back to Final Cut Pro, choose “File-Import-XML...” to import the XML file from FinalSub.

Change Font Setting

If you do loads of subtitles in Final Cut Pro video track and want to change the font settings. You'll be frustrated because you have to change every subtitle one by one.

FinalSub **"Change Font Setting"** will save you a lot of time. It'll get all of your subtitles on the top of the video track and changes font settings automatically. This button equals 2 buttons: ["2.Load FCP Sample Text"](#) and ["5.Send to FCP"](#)

Please change the settings of the first subtitle on the top subtitles video track. Then click **"Change Font Setting"**. FinalSub will get all the subtitles, change all the font settings automatically, then send back to Final Cut Pro.

Hear Video and Input subtitle text

When we get a video and we want to input all the dialogue and scripts in the video to a text, what should we do?

First, Load the movie and Load FCP font setting. Then press Tab to play a little bit video and pause, input the content you heard. Then repeat these steps.

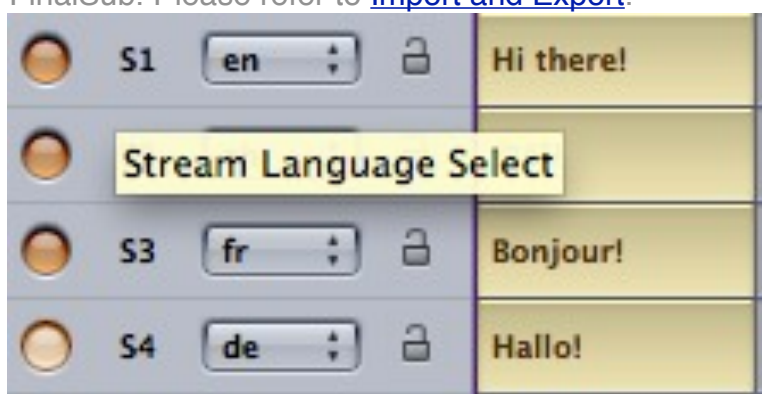
You can even press F6 to get a timecode before input text.

Multi Track of Subtitles

Sometimes, we want to do multi-language subtitles with same timecode. What can we do?

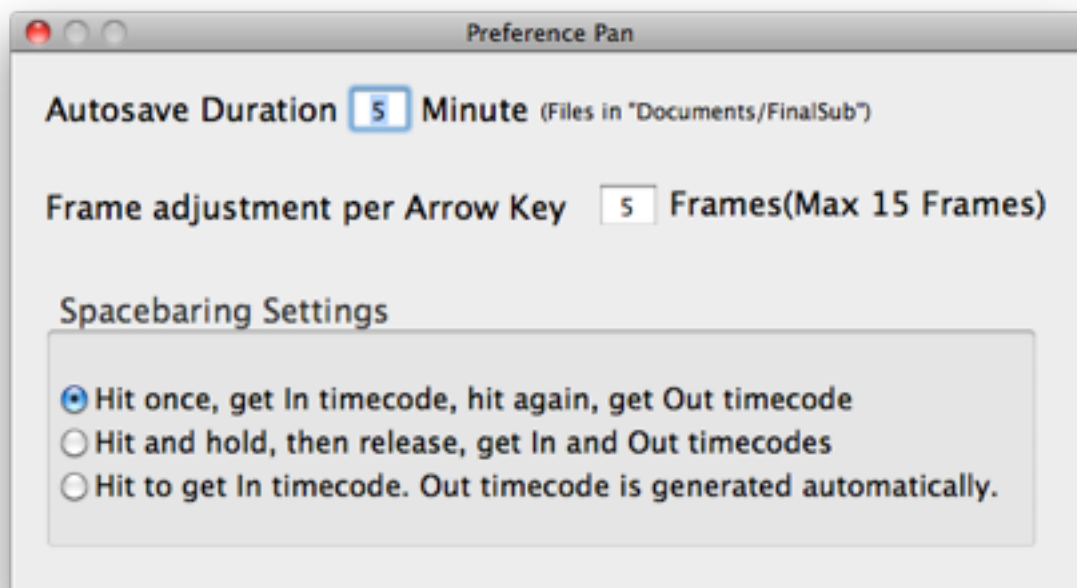
1. Finish your subtitles with timecode in FinalSub and send to Final Cut Pro. Save the current FinalSub project.
2. Copy the text content you want to replace the original. Return to FinalSub and select all the content in the editor. Press shortcut "Command+Option+V" to replace the FinalSub text. Timecode won't be changed. Only the text will be replaced.(Remark: the text in FinalSub and the replaced text from other place will be completely corresponding and exactly the same number of lines..)
3. Send to FCP. It'll make a new sequence to Final Cut Pro including the new subtitles.

If you want to make multi track of subtitle in DVD Studio Pro, you can export STL files from FinalSub. Please refer to [Import and Export](#).



Preference Pane

From FinalSub menu, choose “FinalSub-Preference”, it’ll show up the following pane:



Autosave Duration: The interval of autosave. FinalSub will save a file to the directory Documents/FinalSub every 5 minutes automatically. You can recover the FinalSub project when sudden power down or program Quit Unexpectedly.

Frame adjustment per Arrow Key: You can click on timecode to jump between the movie. You can also click on a timecode, then use Up Arrow Key or Down Arrow Key to jump, or use Left/Right Arrow key to adjust timecode. Press the Left/Right Arrow key once, it will backward or forward 5 frames. You can change this setting.

Spacebaring Settings:

Most often used is the first one. Hit spacebar once to get the IN timecode and hit it again to get the OUT timecode.

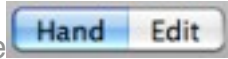
Control Bar


FinalSub supports the common commands of video playback like Play/Pause, Forward, Backward, Start, End. Some controls have shortcut. the shortcuts of Play/Pause, Backward, Forward are “Tab”, “Shift+Tab” and “Control+Tab”. Please refer to [Keyboard Shortcuts](#).

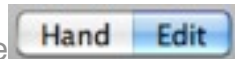


Text and Timecode Operating

Text Operation



In the Hand Mode , you cannot input or delete text, but you can paste text to the editor, delete timecode. This let you delete timecode and avoid delete text accidentally. Press F6 will get a single timecode. (on MacBooks, you may need to press Fn+F6 instead of F6).



In the Edit Mode , the editor comes to a standard Text Editor. You can just get timecode by pressing F6 key.

Timecode Operating

Timecode means the start point or end point of a dialogue among the movie. FinalSub uses the same format with Final Cut Pro: [\[00:00:17.15\]](#) Hour:Minute:Second.Frame.

After finish timecode, you can also click on a timecode jumping to the movie, then use Up Arrow Key or Down Arrow Key to jump around, or use Left/Right Arrow key to adjust timecode. You can even adjust timecode when the movie is playing.

Editor Mode	Status	Action	Reaction
Hand/Edit	Nothing selected	click timecode	Timecode selected and jump to the movie point
Hand/Edit	Nothing selected	option+ ←	Jump to the timecode before current cursor
Hand/Edit	Nothing selected	option+ →	Jump to the timecode after current cursor
Hand/Edit	Select Single Timecode	delete	Timecode deleted
Hand/Edit	Select Single Timecode	enter/return	Cursor return to the text
Hand/Edit	Select Single Timecode	Arrow Key ↑	Jump to the previous timecode
Hand/Edit	Select Single Timecode	Arrow Key ↓	Jump to the next timecode
Hand/Edit	One or more timecode selected	Arrow Key ←	adjust the timecode backward
Hand/Edit	One or more timecode selected	Arrow Key →	adjust the timecode forward
Hand only	One or more timecode selected	delete	All selected timecode deleted. Text will remain.

Please refer to the [“Keyboard Shortcuts”](#).

Import and Export

FinalSub provide import and export function to help you do more things.

1. Import XML file

FinalSub can get font settings from Final Cut Pro XML file. Choose menu “File-Import XML File”.

When you don't have a Final Cut Pro installed, or the version of Final Cut Pro are lower than 6.0.6, you may have to use this command to do the same thing with [“2.Load FCP Sample Text”](#).

Please keep XML version the same.

2. Export XML File

After finishing timecode in FinalSub, just click [“5.Send to FCP”](#) to send a new sequence to Final Cut Pro. But if you want to send the sequence to another Mac, you have to export a XML file and import it in Final Cut Pro. Choose FinalSub menu “File-Export XML File”.

3.Export SRT File

SRT is a standard subtitle file. Many internet videos are going with a SRT file. It's for multi languages, for hearing assistance, etc. It's also a good way to keep a clean video but has subtitle either. Many TV broadcaster use SRT file for their on-air system.

Choose menu“File-Export SRT File” to export a SRT file. Note that the subtitle without timecode will be ignored.

4.Export STL File

STL is another standard subtitle file. Most DVD authoring software like DVD Studio Pro import STL file to the subtitle track.

Choose menu“File-Export STL File” to export a STL file. Note that the subtitle without timecode will be ignored.

Shortcuts

Shortcut	Action	Remark
Tab	Play/Pause	
Shift+Tab	Backward	The interval setting can be set in Preference
Control+Tab	Forward	The interval setting can be set in Preference
F6	Generate a Timecode	Shortcut might be Fn+F6 in MacBoos
Spacebar	Generate Timecode	Only in Hand Mode
enter/return	Return to text	When timecode selected
Option+1	Switch to Hand Mode	
Option+2	Switch to Text Mode	
Arrow Key ↑	Jump to previous timecode	When timecode selected
Arrow Key ↓	Jump to next timecode	When timecode selected
Arrow Key ←	Adjust timecode backward	When timecode selected. Adjust interval is 5s. Interval can be changed in Preference.
Arrow Key →	Adjust timecode forward	When timecode selected. Adjust interval is 5s. Interval can be changed in Preference.
Option+ ←	Jump to previous timecode	
Option+ →	Jump to next timecode	
command+z	Undo	
command+shift+z	Redo	

USB Dongle and Serial Number

Thank you for choosing FinalSub Subtitling Software. The following is your FinalSub related USB Dongle ID and Serial Number. Please keep it safe and don't tell any other people.

Every USB Dongle has its own hardware ID number. It's like cbe8aa95, 8 digits. FinalSub Serial Number is a 32 digits number like "xxxx-xxxx-xxxx-xxxx-xxxx-xxxx-xxxx-xxxx".

FinalSub is copyright protected by USB dongle and serial number.

USB dongle should be well cared. Any man-made damage or lost will cause you additional money to buy FinalSub. We offer 1 year limited warranty for the USB Dongle (You return the dongle and we'll send you a new one).

FAQ

★FinalSub not responding

Please check if the Final Cut Pro is doing something like asking you to save the project. Or you have too many projects and sequences. If so, please leave the working sequence on the root of the Final Cut Pro browser and move all other sequences to a media Bin.

★Why the subtitle preview in FinalSub is not the same with Final Cut Pro

The preview function in FinalSub is not What You See Is What You Get. It's just for rough preview. The final result is the Sample Text you created before you loading to FinalSub.

★Cannot see the sequence when FinalSub prompting Selecting Sequence

If there are several projects and many sequences, FinalSub will take the first project indexed on the top and its sequences. If your sequence is not in this project, you won't see it. Rename your project to keep it on the top.